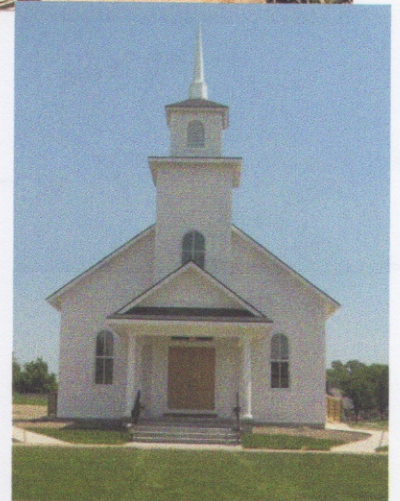
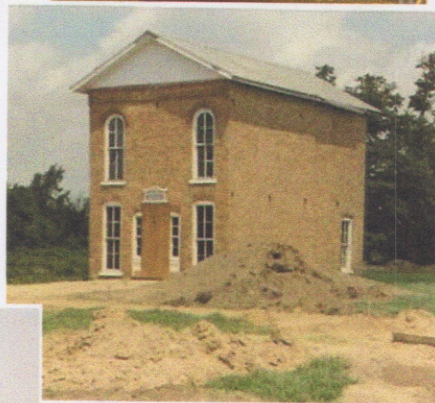


1974

How the Historical Village Grew



Jane M. Rose 5/15/2023

TIMELINE AND ORIGINAL LOCATIONS

Year	Structure	Original Location	Map Location
1974	First two buildings moved to Village site		
1974	Farmhouse	Okemos	1
1974	Tollhouse	Okemos (border with East Lansing)	2
1985	Windmill & Privy	Haslett	
1987	Schoolhouse	Livingston County	
1988	Brickhouse	Okemos	3
1991	Barn	Haslett	
1997	Barnes House	Okemos	4
2006	Log Cabin	Haslett	
2009	Chapel (replica build)	Okemos	5

